

# COVID-19 Solutions

Protecting People & Keeping Businesses Safe



Ipsotek has developed a range of solutions that are focused on protecting people and enabling businesses to operate safely during the COVID-19 pandemic. These solutions can be applied in warehouses and distribution centres, shopping malls, office building, stadiums and transportation hubs.



FACE MASK  
DETECTION



SOCIAL  
DISTANCING



DIRECTIONAL  
FLOW



CONTACTLESS  
ENTRY CONTROL



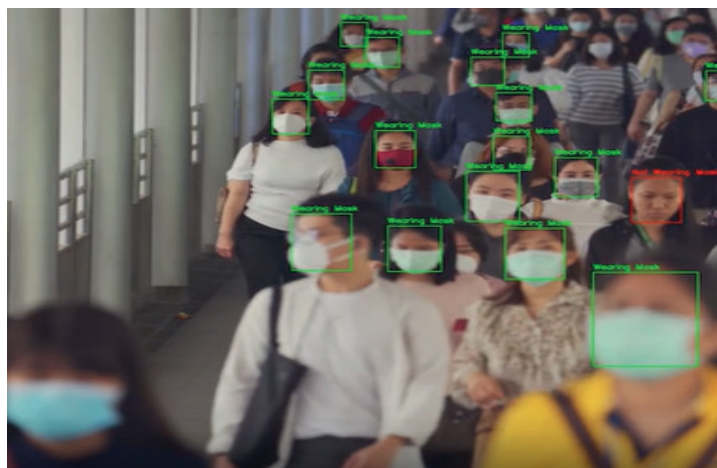
OCCUPANCY  
LEVELS



CONTACT  
TRACING



# Ipsotek's VISuite COVID-19 solutions enable businesses to proactively manage their working environments and provide a safe workplace for their staff.



## Face Mask Detection

Face mask detection for a wide variety of face mask types. Also includes anti-spoofing and other similar presentation attack detections.



## Social Distancing

Ipsotek's patented geospatial algorithm detects if individuals are in breach of social distancing rules.



## Direction Flow and People Counting

VISuite AI's real-time dashboard tool allows operators to review areas with a high frequency of violations thus identifying walkways that require more observation.



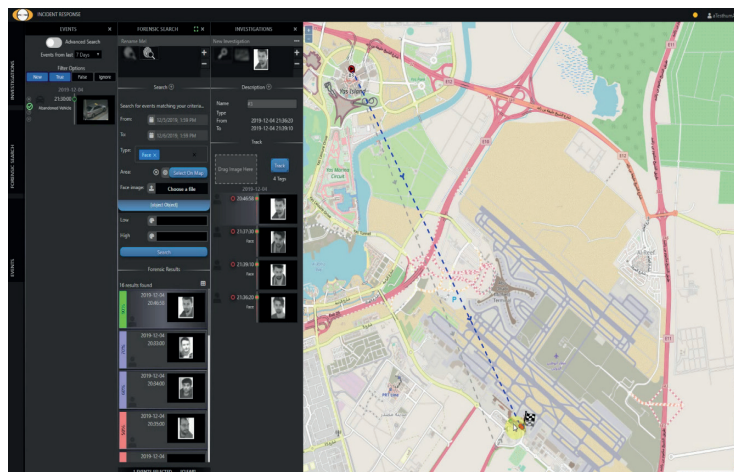
## Contactless Entry

People can enter and exit electronically controlled doors and turnstiles to reduce contamination whilst ensuring anyone who tailgates is detected.



## Occupancy Counting

Live people counting reports can be created to notify operators how many people are in different zones within a given location (i.e. train platforms, shopping malls, etc) before they reach the designated capacity.



## Contact Tracing

Ipsotek's Incident Response interface enables operators to rapidly search networked CCTV cameras using our forensics search and Tag & Track algorithms based on an individual's appearance or face biometrics.

# Ipsotek's VISuite AI COVID-19 solutions have been deployed to assist businesses in meeting their COVID-19 operational requirements.

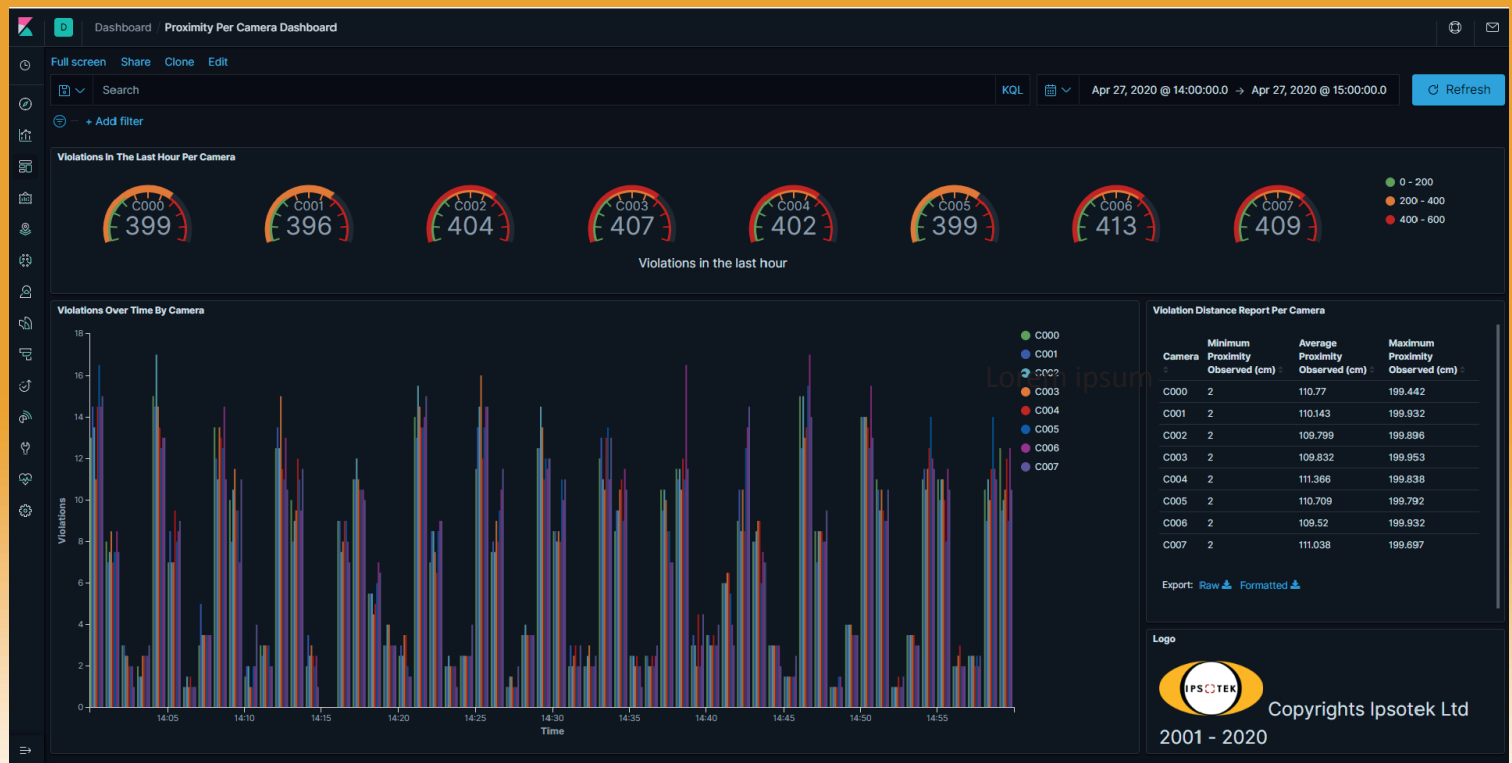
During a recent project to assess Ipsotek's Social Distancing solution we set one parameter to log metadata when people were closer than 2m for 3 seconds.

We configured a second parameter to raise an alarm when people were closer than 2m for 10 seconds or more.

Lastly, if a spike in proximity events was detected, an email was sent to the supervisor and triggered a camera audio alarm.



Over a 3 week period, Ipsotek's Social Distancing solution led to a 70% reduction in violations. VISuite AI also provided actionable data that was previously not available to the management such as; daily reports on violations, information on hot-spots within their premises, daily trends and spikes.



Incorporated within VISuite AI is a powerful reporting tool which allows end users to display metadata as a dynamic dashboard. The image above shows Social Distancing violations, where people are closer than 2m for longer than 3 seconds across eight cameras.



Established in 2001, Ipsotek is a pioneer in the field of Artificial Intelligence (AI), Scenario-based Intelligent Video Analytics, Face Recognition (FR) and License Plate Recognition (LPR) solutions for mission critical applications. With a proven track record of delivering its award-winning platform, VISuite, to customers world-wide, Ipsotek is recognised as a trusted solutions provider with extensive subject matter expertise.



- 70+ Airport Projects
- 60+ Border, Transport and Police Authorities
- 19+ Nuclear, Oil & Gas and Energy Sites
- 600+ Projects in 38 Countries
- 15,000+ VISuite channels
- 1,400+ VIFace channels

Ipsotek has integrated with many of the world's leading security manufacturers' products. These include:

\*A full list of our current integrations is available upon request.

Advancis WinGuard | Allied Vision | Arecont Vision | Avigilon Control Center | Axis Communications | BAE Systems UVMS | Bosch | Cathexis Vision | Chubb | CNL IPSecurity Center | Cortech | FLIR Chameleon | FLIR Latitude | Genetec Security Center | Geutebruck GeViScope | Honeywell | IDS | IndigoVision Control Center | Maxxess e-fusion | Milestone Xprotect | Mobotix | Onvif | Panasonic | Pelco VideoXpert | SAAB | Siemens Surveillance | Sony | Sureview Systems | Synectics Synergy3 | UTC Video Security Center | Vicon Valerus | Vidsys Enterprise



**For more information please visit [www.ipsotek.com](http://www.ipsotek.com) or contact our offices below**

Ipsotek Ltd  
**UK & Europe**  
(+44) 20 8971 8300  
[sales.uk@ipsotek.com](mailto:sales.uk@ipsotek.com)

**Address**  
Tuition House, 27-37 St  
George's Road Wimbledon,  
London SW19 4EU, UK

Ipsotek DMCC  
**Middle East & Africa**  
(+971) 4 551 5102  
[sales.me@ipsotek.com](mailto:sales.me@ipsotek.com)

**Address**  
2001, X2 Tower, Cluster  
X, JLT PO Box: 214607,  
Dubai, UAE

Ipsotek PTE Ltd  
**APAC**  
(+65) 6513 9723  
[sales.apac@ipsotek.com](mailto:sales.apac@ipsotek.com)

**Address**  
60 Paya Lebar Road,  
#11-30 Paya Lebar Square,  
Singapore 409051