



A . I . V . A

Artificial Intelligence Video Analytics



Artificial Intelligence Video Analytics

VISuite AI

VISuite AI is the fusion of Artificial Intelligence (AI), Facial Recognition (FR) and Automatic Number Plate Recognition (ANPR) with Ipsotek's patented Scenario-based Rule Engine (SBRE). This highly scalable platform enables users to efficiently manage automatically generated alarms in real-time for mission critical applications, resulting in reduced operator response times.



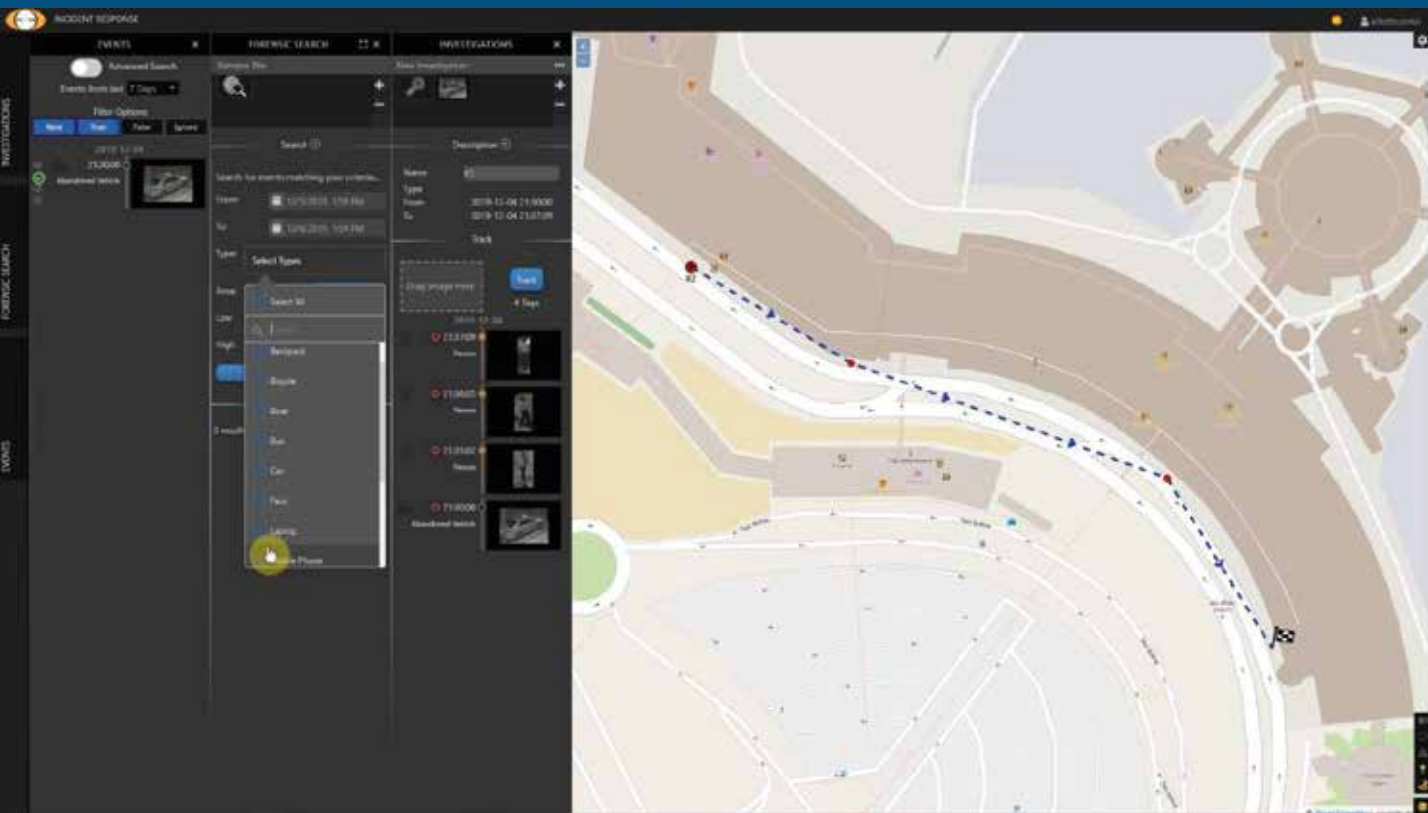
VISuite AI uses a neural network to collect and classify information according to the observed content in a specific scene and generates detailed metadata for the efficient management of automatically generated alarms.

- Object recognition and classification
- Tailored solutions for industry sector specific requirements
- Automated calibration resulting in reduced deployment time
- 25 4CIF or 15 HD camera channels analysed at full frame rate on a single NVIDIA T4 GPU
- Real-time situational awareness

VISuite AI licensing model enables up to 32 rules to be applied to a camera channel through a perpetual software license and is available in three configurations

| VISuite Advanced AI | VISuite Professional AI | VISuite Ultimate AI |
|----------------------------|----------------------------|----------------------------|
| GPS Coordinates | GPS Coordinates | GPS Coordinates |
| Live Alarms | Live Alarms | Live Alarms |
| Reporting Interface | Reporting Interface | Reporting Interface |
| AI-Based Object Classifier | AI-Based Object Classifier | AI-Based Object Classifier |
| AI-based Tracker | AI-based Tracker | AI-based Tracker |
| | Forensic Search | Forensic Search |
| | | Tag and Track |

VISuite AI incorporates a new, ergonomically designed GUI that provides an intuitive interface for operators, with easy access to commonly used functions resulting in reduced operator response times.



VISuite Advanced AI

Actively monitors cameras connected to a network and tracks objects in real-time throughout the video scene. At the core of VISuite AI is Ipsotek's patented Scenario based Rule Engine (SBRE), combined with AI algorithms which dramatically enhance detection accuracy and minimise false alarm rates.

VISuite Professional AI

Includes all of the functionalities of VISuite Advanced AI with the addition of Ipsotek's VIForensics. This is a comprehensive, real-time forensic search tool that operates on the metadata captured by VISuite AI, enabling operators to search in LIVE or FORENSIC event mode for a person or vehicle. VISuite AI stores metadata about every detected and tracked object, person and vehicle in the VIForensics database and provides search times of < 5sec.

VISuite Ultimate AI

Includes all of the functionality of VISuite Professional AI with the addition of Ipsotek's Tag and Track, our award-winning Video Analytics-based tracking solution that operates on a network of overlapping and non-overlapping surveillance cameras to track a "tagged" individual. Tag and Track automatically follows a person, intuitively waiting and reacquiring them should they vanish into areas not covered by the surveillance network. The system will also track the tagged individual backwards in time to show where that person first appeared in the surveillance network.

Established in 2001, Ipsotek is a pioneer in the field of Scenario-based Intelligent Video Analytics, Facial Recognition (FR) and Artificial Intelligence (AI) solutions for mission critical applications. With a proven track record of delivering its award-winning platform, VISuite to customers worldwide, Ipsotek is recognised as a trusted solutions supplier with extensive subject matter expertise.



- 25+ Airports
- 25+ Critical Energy and Utility sites
- 8+ Nuclear Power Stations
- 500+ successful projects
- 15,000+ VISuite channels
- 1,400+ VIFace channels

Ipsotek has integrated with many of world's leading security manufacturer's products. These include:

A full list of our current integrations is available upon request.

Advancis WinGuard | Avigilon Control Center | BAE Systems UVMS | Cathexis Vision | CNL IPSecurity Center | FLIR Chameleon | FLIR Latitude | Genetec Security Center | Geutebrück GeViScope | Honeywell DVM | IndigoVision Control Center | Maxxess eFusion | Milestone Xprotect | Pelco VideoXpert | Siemens Surveillance | Synectics Synergy3 | Vicon Valerus | Vidsys Enterprise



For more information please visit
www.ipsotek.com
or contact our offices below

Ipsotek Ltd
UK & Europe
(+44) 20 8971 8300
sales.uk@ipsotek.com

Address
Tuition House, 27-37 St George's Road
Wimbledon, London SW19 4EU, UK

Ipsotek DMCC
Middle East & Africa
(+971) 4 551 5102
sales.me@ipsotek.com

Address
2001, X2 Tower, Cluster X, JLT
PO Box: 214607, Dubai, UAE

Ipsotek PTE Ltd
APAC
(+65) 6513 9723
sales.apac@ipsotek.com

Address
60 Paya Lebar Road, #11-30 Paya
Lebar Square, Singapore 409051