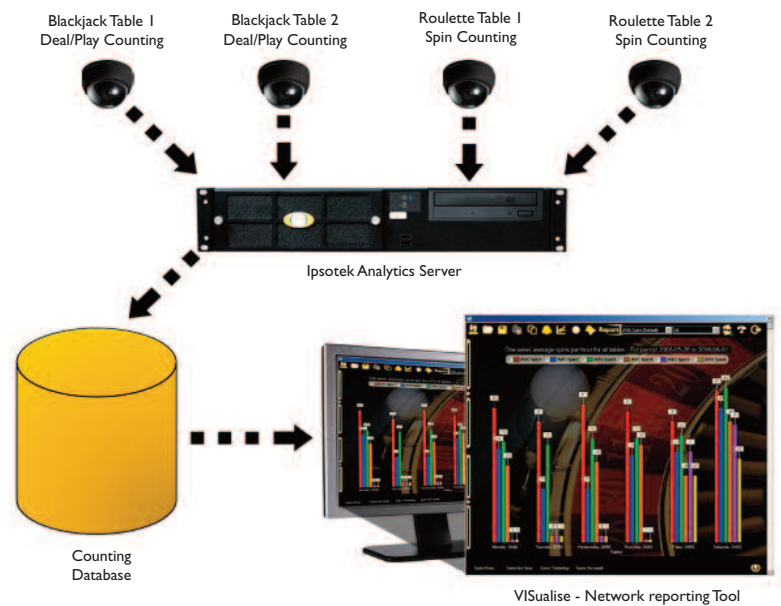


CASINO SUITE

The Ipsotek Casino Suite (ICS) is a set of modules designed to significantly boost the productivity of both roulette and card tables. Activity and event information is gathered from the gaming tables, typically using existing CCTV cameras. These activities, such as roulette wheel spins or a hand of cards being dealt, are turned into data which can be used to trigger performance-related alarms as well as being stored in a central database which can be used for staff productivity management.

The core of the Ipsotek Casino Suite is a dedicated VI (Visual Intelligence) Server which is pre-loaded with Ipsotek's casino productivity modules.

As well as providing real-time and historical management information the Ipsotek Casino Suite provides a unique "drill down" feature. For instance if the system has highlighted that a table was running below a desired level, at a certain point in time the video for this period can be instantly retrieved and viewed simply by clicking on the performance chart.



Typical Management Questions which can be answered using ICS:

- Which of my dealers are performing below a required level?
- Which of my card tables are the least productive?
- How many boxes are being played at each card table?
- What is the staffing profile that I need to meet customer demand?
- Which of my staff need additional training and development?



RECOGNISE. ANALYSE. REALISE.

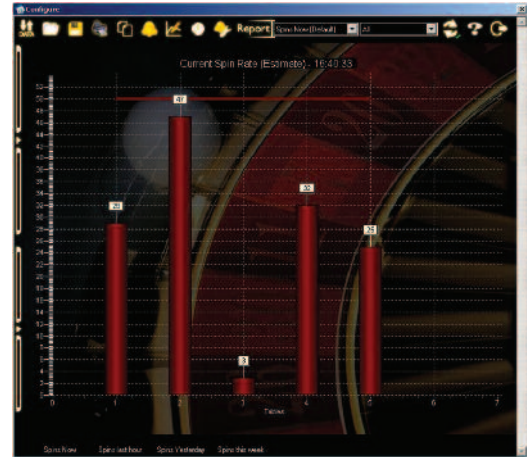


Roulette wheel frequency

Using existing CCTV cameras which are positioned above roulette tables, Ipsotek's unique 'event counter' can constantly monitor the frequency of roulette wheel spins and instantly provide management with alerts if the desired frequency is exceeded or not met. This information is stored in a central database and can be cross referenced with dealers to provide valuable performance metrics down to the individual table or dealer.

Standard reports available for roulette are:

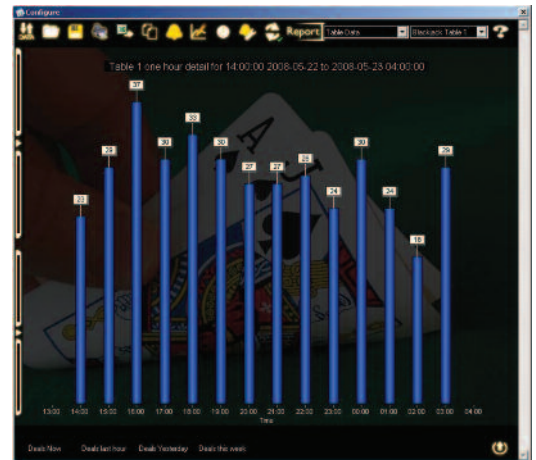
- Current spin per hour across all open tables
- Actual spins, hour by hour, for all tables in for a given session
- Identification of low activity periods for open tables
- Identification of times when upper or lower spin thresholds are breached



Card table productivity management

Using Ipsotek's unique event counting capability, the sequence of events that constitutes a hand of cards can be encapsulated and counted with total accuracy. This not only allows management to monitor each dealer in absolute terms against agreed metrics but it can also be used to manage staffing to ensure that the right number of dealers are always available at busy times. Ipsotek's card table module not only analyses the dealer activity but can also identify the number of boxes being played and hence be a valuable indicator as to whether to open another table.

- Current deal rate across all tables
- Current number of boxes being played at each table
- Total number of hands dealt in any specified time window
- Total number of boxes played at each table in any specified time window



How it works?

The Ipsotek Casino Suite utilises existing CCTV cameras to harvest valuable behavioural information from gaming tables. The basis of this system is to identify and log 'events' - an event is either the spin of a roulette wheel or a dealer dealing cards to themselves or into a player's box. Using Ipsotek's leading digital imaging capabilities each event is captured, time-stamped and placed into a database. Once in the database this information can then be retrieved to answer vital operational questions about player and dealer activity.

